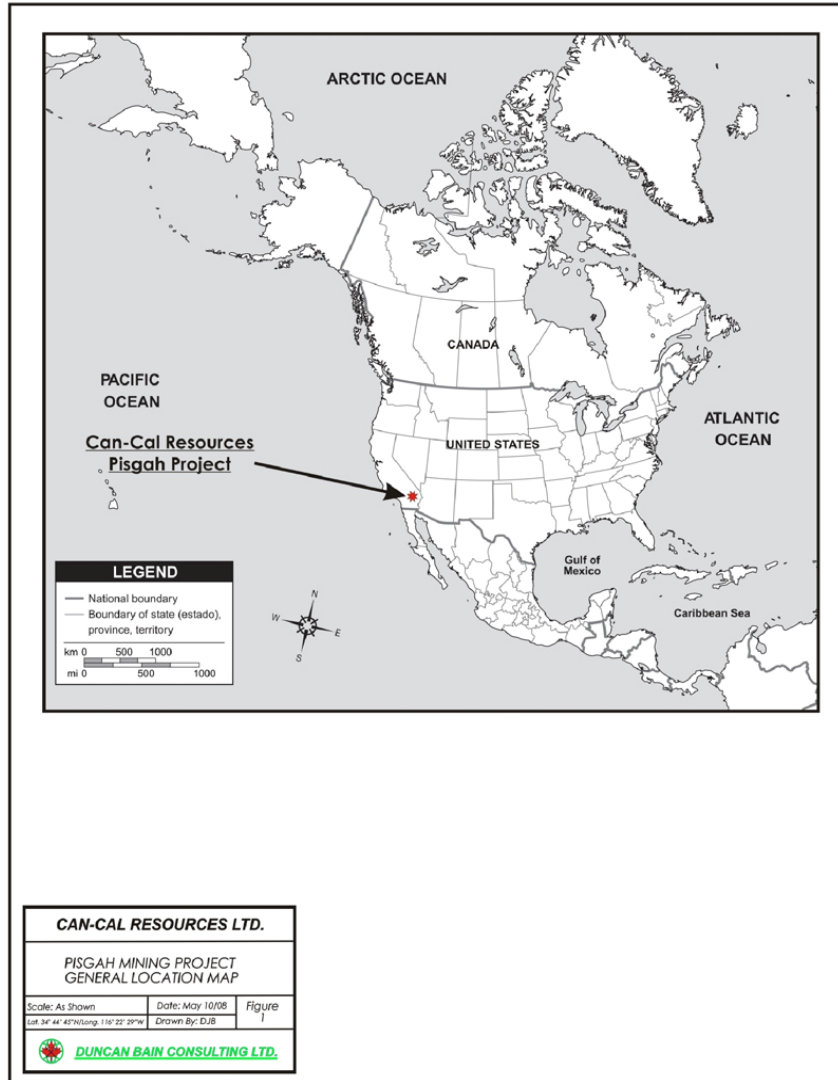


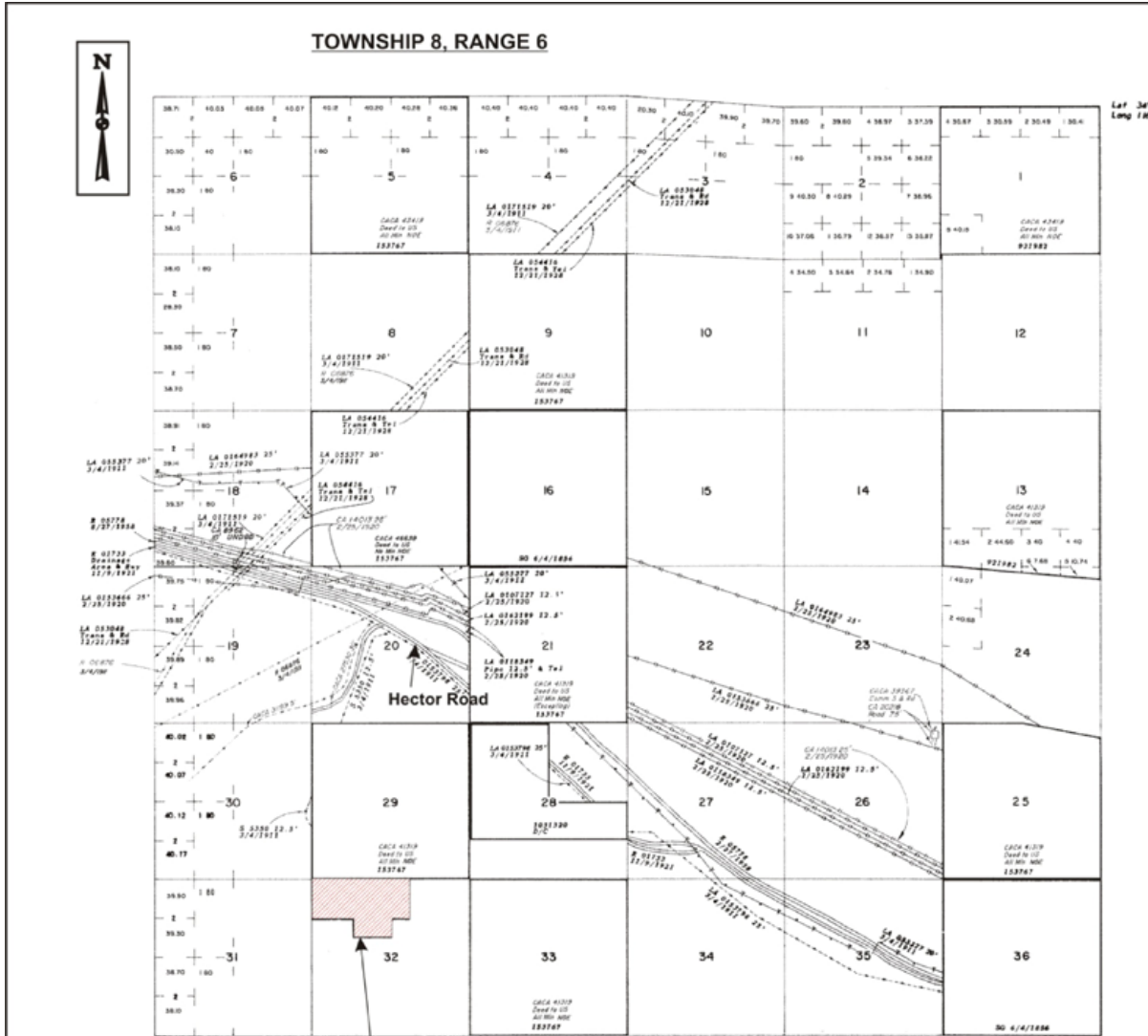
# Pisgah Project General Location Map



# Pisgah Project Regional Location Map



# Pisgah Project Township Location Map

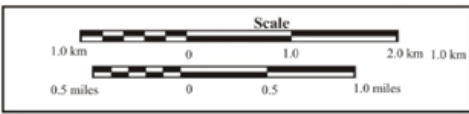


Lat. 34°50'N  
Long. 116°17'W

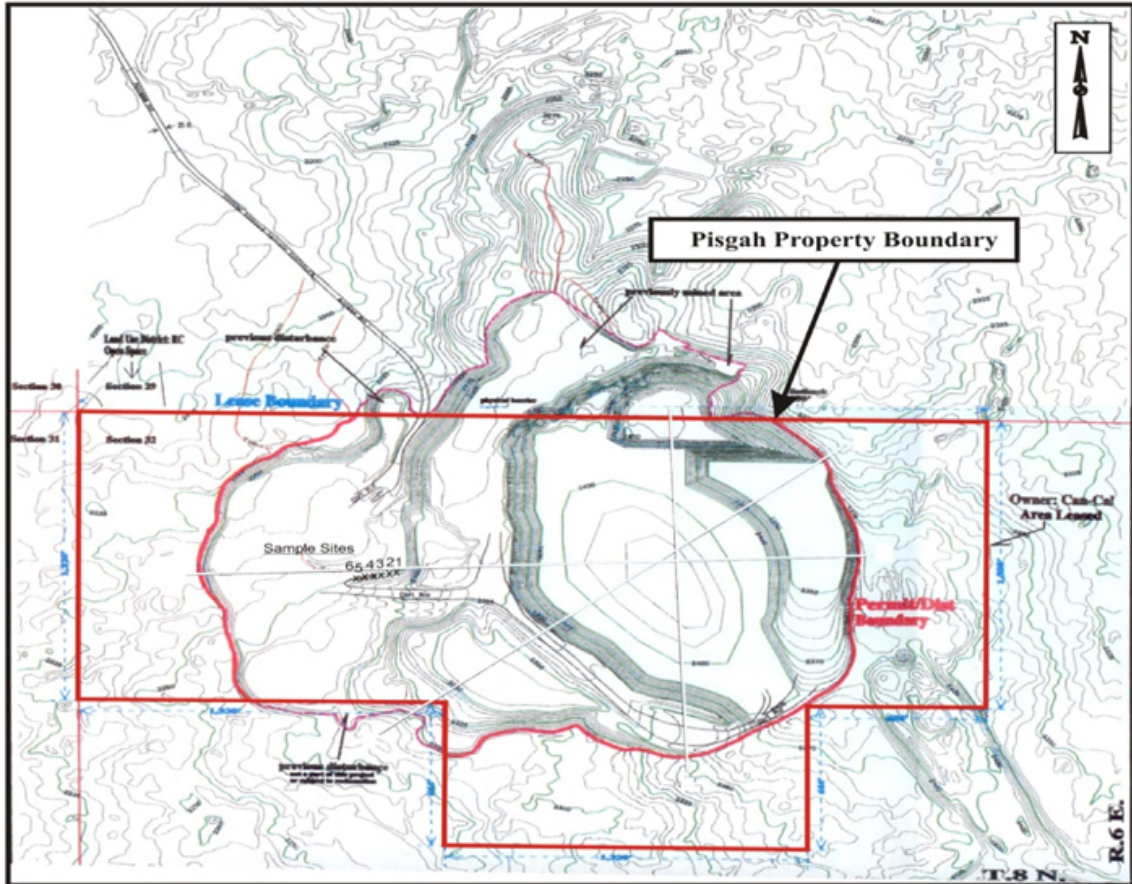
Pisgah Project Area

**WARNING EXTORTION**  
This plot is the Bureau's Record of Title, and should be used only as a graphic display of the recorded survey data. Records herein do not reflect title changes which may have been effected by manual measurements of maps or other copies of same. Refer to the cadastral survey for official survey information.

<b>CAN-CAL RESOURCES LTD.</b>		
PISGAH MINING PROJECT TOWNSHIP LOCATION MAP		
Scale: 1:60,000	Date: May 10/08	Figure 3
Lat. 34° 44' 45" N / Long. 116° 22' 29" W	Drawn By: DJB	
<b>DUNCAN BAIN CONSULTING LTD.</b>		



# Pisgah Project Topography Map



<b>CAN-CAL RESOURCES LTD.</b>		
PISGAH MINING PROJECT CURRENT TOPOGRAPHY		
Scale: 1:8,000	Date: May 10/08	Figure 4
Lat: 34° 44' 45" N / Long: 116° 22' 29" W		Drawn By: DJB
<b>DUNCAN BAIN CONSULTING LTD.</b>		

